



Clamp Body
Profiled Inside Surface with Tension Clearance

14



Clamp Body
Smooth Inside Surface without Tension Clearance

15



Clamp Body with Elastomer Insert

16



Noise Reduction Clamp

17



Clamp Body for Conduit Hoses and Cable Inserts

18















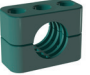



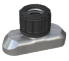





Clamp Body
Compact Design for both Compact / Regular Hydraulic Hoses

19



Clamp Body
Rectangular Design for Proximity Switches

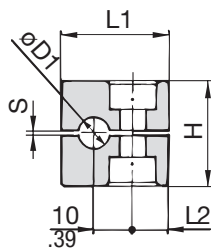
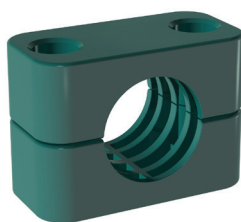
19

	Weld Plate SP	20		Cover Plate DP	28
	Elongated Weld Plate SPV	20		Hexagon Head Bolt for use with Cover Plate DP AS	28
	Twin Weld Plate DSP	21		Safety Washer (DIN 93) SI	29
	Group Weld Plate RAP	21		Safety Washer (DIN 463) SI	29
	Angled Weld Plate WSP	22		Socket Cap Screw IS	30
	Bridge Weld Plate BSP	22		Slotted Head Screw LI	30
	Clamp Body for Multi-Group Weld Plates	23		Hexagon Head Bolt for use with Insert ES / EP AS	30
	Multi-Group Weld Plate RAP-MGR	23		Insert ES / EP	30
	Hexagon Rail Nut SM	24		Safety Locking Plate SIG	31
	Mounting Rail TS	24		Stacking Bolt AF	31
	Fastening Adaptor SWG-MRA	25		Clamp Assemblies	32
	Channel Rail Adaptor CRA	26			

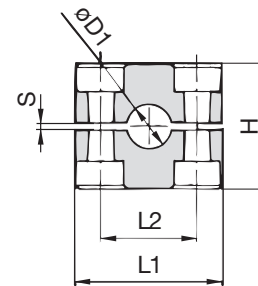
Clamp Body - Profiled Design

Profiled Inside Surface with Tension Clearance

A



STAUFF Group 1



STAUFF Group 1A to 8

Ordering Codes

Clamp Body

*1*06-*PP

Clamp Body, STAUFF Group 1A

*1*06A-*PP

One clamp body is consisting of two clamp halves.

* STAUFF Group

1

* Exact outside diameter Ø D1 (mm)

06

* Material code (see below)

PP

Standard Materials



Polypropylene

Colour: Green
Material code: **PP**



Polypropylene

Colour: Black
Material code: **PP-BK**



Polyamide

Colour: Black
Material code: **PA**



Thermoplastic Elastomer (87 Shore-A)

Colour: Black
Material code: **SA87**



Aluminium

Colour: Self-Colour
Material code: **AL** (STAUFF Group 1A to 6)

See pages 178 / 179 for material properties and technical information.

Special Materials

Please contact STAUFF for further details on fire-proof clamp body materials, tested and approved according to several international fire-protection standards (such as BS 6853, EN 45545-2, UL 94 and many more).

See pages 180 / 181 for material properties and technical information.

Product Features

- Proven, tested and trusted product in various markets
- Recommended for the safe installation of rigid pipes and tubes
- Available for all commonly used pipe and tube outside diameters
- Environmental protection due to vibration/noise reducing design
- Excellent weathering resistance, even under extreme conditions

Group	STAUFF	DIN	Outside Diameter Pipe / Tube		Nominal Bore		Ordering Codes (2 Clamp Halves)	Dimensions (mm/in)						
			Ø D1 (mm)	(in)	Pipe (in)	Copper Tube ASTM B88 (in)		L1	L2	H	S min.	Width		
1		0	6				106-***							
			6,4	1/4			106.4-***							
			8	5/16			108-***	28	9,5	27	0,4	30		
			9,5	3/8		1/4	109.5-***	1.10	.37	1.06	.02	1.18		
			10		1/8		110-***							
1A		1	6				106A-***							
			6,4	1/4			106.4A-***							
			8	5/16			108A-***	37	20	27	0,4	30		
			9,5	3/8		1/4	109.5A-***	1.46	.79	1.06	.02	1.18		
			10		1/8		110A-***							
2		2	12				112-***							
			12,7	1/2		3/8	212.7-***							
			13,5		1/4		213.5-***							
			14				214-***							
			15				215-***	42	26	33	0,6	30		
3		3	16	5/8		1/2	216-***	1.65	1.02	1.30	.02	1.18		
			17,2		3/8		217.2-***							
			18				218-***							
			19	3/4			319-***							
			20				320-***							
4		4	21,3		1/2		321.3-***	50	33	36	0,6	30		
			22	7/8		3/4	322-***	1.97	1.30	1.42	.02	1.18		
			25				325-***							
			25,4	1			325.4-***							
			26,9		3/4		426.9-***							
5		5	28				428-***							
			28,6			1	428.6-***	59	40	42	0,6	30		
			30				430-***	2.32	1.57	1.65	.02	1.18		
			32				432-***							
			32	1-1/4			532-***							
6		6	33,7		1		533.7-***							
			35			1-1/4	535-***							
			38	1-1/2			538-***	71	52	58	0,8	30		
			40				540-***	2.80	2.05	2.28	.03	1.18		
			41,3		1-1/2		541.3-***							
7		7	42		1-1/4		542-***							
			44,5	1-3/4			644.5-***							
			48,3		1-1/2		648.3-***	86	66	66	0,8	30		
			50,8	2			650.8-***	3.39	2.60	2.60	.03	1.18		
			54		2		654-***							
8		8	57,2	2-1/4			757.2-***							
			60,3		2		760.3-***							
			63,5	2-1/2			763.5-***	121	94	93	0,8	30		
			70	2-3/4			770-***	4.76	3.70	3.66	.03	1.18		
			73		2-1/2 (ANSI B 36-10)		773-***							
8		8	76,1	3	2-1/2 (DIN EN 10220)		776.1-***							
			88,9		3		888.9-***	147	120	118	0,8	30		
			102	4	3-1/2		8102L-***	5.79	4.72	4.65	.03	1.18		

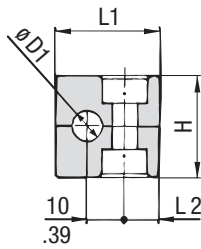
Additional outside diameters are available upon request. Please contact STAUFF for further information.



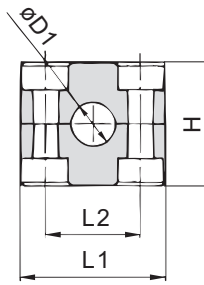
Dimensional drawings: All dimensions in mm (in).

Clamp Body - Type H

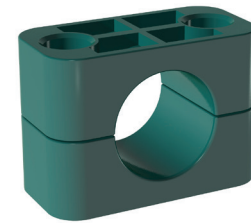
Smooth Inside Surface without Tension Clearance



STAUFF Group 1



STAUFF Group 1A to 8



A

Group	DIN	Outside Diameter		Ordering Codes (2 Clamp Halves)	Dimensions			
		Hose Ø D1 (mm)	(in)		(** - H = Material)	L1	L2	H
1	0	6		106-**-H				
		6,4	1/4	106.4-**-H				
		8	5/16	108-**-H	28	9,5	26	30
		9,5	3/8	109.5-**-H	1.10	.37	1.02	1.18
		10		110-**-H				
		12		112-**-H				
1A	1	6		106A-**-H				
		6,4	1/4	106.4A-**-H				
		8	5/16	108A-**-H	37	20	26	30
		9,5	3/8	109.5A-**-H	1.46	.79	1.02	1.18
		10		110A-**-H				
		12		112A-**-H				
2	2	12,7	1/2	212.7-**-H				
		13,5		213.5-**-H				
		14		214-**-H	42	26	32	30
		15		215-**-H	1.65	1.02	1.26	1.18
		16	5/8	216-**-H				
		17,2		217.2-**-H				
3	3	18		218-**-H				
		19	3/4	319-**-H				
		20		320-**-H				
		21,3		321.3-**-H	50	33	35,5	30
		22	7/8	322-**-H	1.97	1.30	1.40	1.18
		25		325-**-H				
4	4	25,4	1	325.4-**-H				
		26,9		426.9-**-H				
		28		428-**-H	59	40	41,5	30
		30		430-**-H	2.32	1.57	1.63	1.18
		32		432-**-H				
		32	1-1/4	532-**-H				
5	5	33,7		533.7-**-H				
		35		535-**-H	71	52	56,5	30
		38	1-1/2	538-**-H	2.80	2.05	2.22	1.18
		40		540-**-H				
		42		542-**-H				
		44,5	1-3/4	644.5-**-H				
6	6	48,3		648.3-**-H	86	66	64,5	30
		50,8	2	650.8-**-H	3.39	2.60	2.54	1.18
		54		654-**-H				
		57,2	2-1/4	757.2-**-H				
		60,3		760.3-**-H				
		63,5	2-1/2	763.5-**-H	121	94	92	30
7	7	70	2-3/4	770-**-H	4.76	3.70	3.62	1.18
		73		773-**-H				
		76,1	3	776.1-**-H				
		88,9		888.9-**-H	147	120	116	30
		102	4	8102L-**-H	5.79	4.72	4.57	1.18

Additional outside diameters are available upon request. Please contact STAUFF for further information.

Ordering Codes

Clamp Body ***1*06-*PP-H**
 Clamp Body, STAUFF Group 1A ***1*06A-*PP-H**

One clamp body is consisting of two clamp halves.

- * STAUFF Group **1**
- * Exact outside diameter Ø D1 (mm) **06**
- * Material code (see below) **PP-H**

Standard Materials

- Polypropylene**
Colour: Green
Material code: **PP-H**
- Polypropylene**
Colour: Black
Material code: **PP-H-BK**
- Polyamide**
Colour: Black
Material code: **PA-H**
- Thermoplastic Elastomer (87 Shore-A)**
Colour: Black
Material code: **SA87-H**

See pages 178 / 179 for material properties and technical information.

Special Materials

Please contact STAUFF for further details on fire-proof clamp body materials, tested and approved according to several international fire-protection standards (such as BS 6853, EN 45545-2, UL 94 and many more).

See pages 180 / 181 for material properties and technical information.

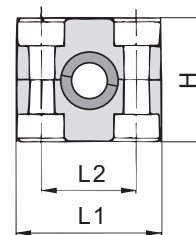
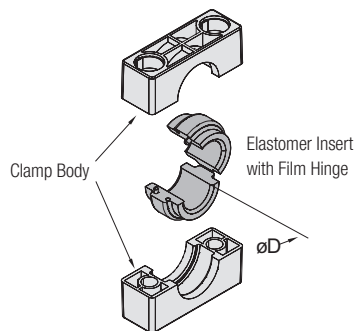
Product Features

- Proven, tested and trusted product in various markets
- Recommended for the safe installation of hoses and cables
- Chamfered edges avoid damaging of the hoses and cables
- Available for all commonly used hose and cable outside diameters
- Excellent weathering resistance, even under extreme conditions



Dimensional drawings: All dimensions in mm (in).

Clamp Body with Elastomer Insert Type RI



Ordering Codes

Clamp Assembly

***4*06-*PP-R**

One assembly is consisting of one clamp body and one insert.

- * STAUFF Group **4**
- * Exact outside diameter Ø D (mm) **06**
- * Material code (see below) **PP**
- * Insert **R**
- * # = Special Number (only STAUFF Group) **410053**

Clamp Body

***4-*PP-R**

One clamp body is consisting of two clamp halves.

- * STAUFF Group **4**
- * Insert **R**
- * # = Special Number (only STAUFF Group) **410053**

Elastomer Insert *RI-*06-*4/4S-*SA73

- * Elastomer Insert **RI**
- * Exact outside diameter Ø D (mm) **06**
- * STAUFF Group **4 (DIN) 4/4S**
- 5 (STAUFF) 5**
- 6 (DIN) 6/5S**
- 6 (STAUFF) 6**
- * Material code (see below) **SA73**
- * # = Special Number (only STAUFF Group) **410053**

Group	STAUFF	DIN	Outside Diameter		Ordering Codes (* = Material)			Dimensions (mm/in)			
			Pipe / Tube / Hose	Ø D	Clamp Assembly (Clamp Body + Insert)	Clamp Body (2 Clamp Halves)	Insert *	L1	L2	H	Width
4	4	4	6		406-*R	4-*R	RI-06-4/4S-*	59	40	41,2	30
			8	5/16	408-*R		RI-08-4/4S-*				
			10		410-*R		RI-10-4/4S-*				
			12		412-*R		RI-12-4/4S-*				
			12,7	1/2	412.7-*R		RI-12.7-4/4S-*				
			14		414-*R		RI-14-4/4S-*				
			15		415-*R		RI-15-4/4S-*				
			16	5/8	416-*R		RI-16-4/4S-*				
			17,2		417.2-*R		RI-17.2-4/4S-*				
			18		418-*R		RI-18-4/4S-*				
5	5	5	19	3/4	419-*R	5-*R-#	RI-19-4/4S-*	71	52	67	30
			20		520-*R-#		RI-20-5-*#				
			21,3		521.3-*R-#		RI-21.3-5-*#				
			22	7/8	522-*R-#		RI-22-5-*#				
			25		525-*R-#		RI-25-5-*#				
			26,9		526.9-*R-#		RI-26.9-5-*#				
			28		528-*R-#		RI-28-5-*#				
			30		530-*R-#		RI-30-5-*#				
6	6	6	32	1-1/4	532-*R-#	6-*R	RI-32-5-*#	86	66	64,5	30
			20		620-*R		RI-20-6/5S-*				
			21,3		621.3-*R		RI-21.3-6/5S-*				
			22	7/8	622-*R		RI-22-6/5S-*				
			25		625-*R		RI-25-6/5S-*				
			26,9		626.9-*R		RI-26.9-6/5S-*				
			28		628-*R		RI-28-6/5S-*				
			30		630-*R		RI-30-6/5S-*				
			32	1-1/4	632-*R		RI-32-6/5S-*				
			6	6	6		35				
38		638-*R-#				RI-38-6-*#					
40		640-*R-#				RI-40-6-*#					
42		642-*R-#				RI-42-6-*#					

Standard Materials



Polypropylene
Colour: Black
Material code: **PP-R**



Polyamide
Colour: Black
Material code: **PA-R**



Elastomer Insert
Thermoplastic Elastomer (73 Shore-A)
Colour: Black
Material code: **SA73**

See pages 178 / 179 for material properties and technical information.

Special Materials

Please contact STAUFF for further details on fire-proof clamp body materials, tested and approved according to several international fire-protection standards (such as BS 6853, EN 45545-2, UL 94 and many more).

See pages 180 / 181 for material properties and technical information.

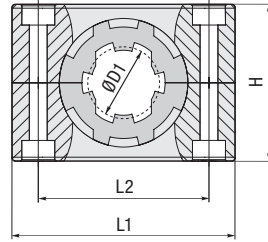
* Elastomer Inserts for Standard Series clamp bodies, STAUFF Group 4 also fit into Heavy Series clamp bodies, STAUFF Group 4S. Elastomer Inserts for Standard Series clamp bodies, STAUFF Group 6 also fit into Heavy Series clamp bodies, STAUFF Group 5S.

Additional outside diameters are available upon request. Please contact STAUFF for further information.

Product Features

- Proven, tested and trusted product in various markets
- Either for the extra vibration/noise reducing installation of pipes and tubes or the extra gentle installation of hoses and cables
- Available for all commonly used outside diameters
- Excellent weathering resistance, even under extreme conditions



Noise Reduction Clamp
Type NRC


A

Group	STAUFF DIN	Outside Diameter Pipe / Tube Ø D1		Ordering Codes (* = Material)			Dimensions (mm / in)			
		(mm)	(in)	Clamp Assembly (Clamp Body + NRC Insert)	Clamp Body (2 Clamp Halves)	NRC Insert (2 Insert Halves)	L1	L2	H	Width
2	2	6		206-*NRC	2-*RI-S/NRC	RI-NRC-6-2-*	42	26	32	30
		8	5/16	208-*NRC		RI-NRC-8-2-*				
		10		210-*NRC		RI-NRC-10-2-*				
		12		212-*NRC		RI-NRC-12-2-*				
		12,7	1/2	212.7-*NRC		RI-NRC-12.7-2-*				
3	3	14		314-*NRC	3-*RI-S/NRC	RI-NRC-14-3-*	50	33	35,5	30
		15		315-*NRC		RI-NRC-15-3-*				
		16	5/8	316-*NRC		RI-NRC-16-3-*				
4	4	18		418-*NRC	4-*RI-S/NRC	RI-NRC-18-4-*	59	40	41,5	30
		20		420-*NRC		RI-NRC-20-4-*				
5	5	21,3		521.3-*NRC	5-*RI-S/NRC	RI-NRC-21.3-5-*	71	52	56,5	30
		22	7/8	522-*NRC		RI-NRC-22-5-*				
		25		525-*NRC		RI-NRC-25-5-*				
		26,9		526.9-*NRC		RI-NRC-26.9-5-*				
		28		528-*NRC		RI-NRC-28-5-*				
		30		530-*NRC		RI-NRC-30-5-*				
		32	1-1/4	532-*NRC		RI-NRC-32-5-*				
6	6	33,7		633.7-*NRC	6-*RI-S/NRC	RI-NRC-33.7-6-*	86	66	64,5	30
		35		635-*NRC		RI-NRC-35-6-*				
		38	1-1/2	638-*NRC		RI-NRC-38-6-*				
		40		640-*NRC		RI-NRC-40-6-*				
		42		642-*NRC		RI-NRC-42-6-*				
7M	7M	45,5		745.5M-*NRC	7M-*RI-S/NRC	RI-NRC-45.5-7M-*	123	100	100	40
		48		748M-*NRC		RI-NRC-48-7M-*				
		51		751M-*NRC		RI-NRC-51-7M-*				
		53,4		753.4M-*NRC		RI-NRC-53.4-7M-*				
		57		757M-*NRC		RI-NRC-57-7M-*				
		60		760M-*NRC		RI-NRC-60-7M-*				
		63,5		763.5M-*NRC		RI-NRC-63.5-7M-*				
		65		765M-*NRC		RI-NRC-65-7M-*				
8M	8M	70		870M-*NRC	8M-*RI-S/NRC	RI-NRC-70-8M-*	165	140	135	45
		72		872M-*NRC		RI-NRC-72-8M-*				
		76		876M-*NRC		RI-NRC-76-8M-*				
		80		880M-*NRC		RI-NRC-80-8M-*				
		88,9		888.9M-*NRC		RI-NRC-88.9-8M-*				

Ordering Codes

Clamp Assembly *2*12-*PP-NRC

One assembly is consisting of one clamp body and one insert.

- * STAUFF Group 2
- * Exact outside diameter Ø D1 (mm) 12
- * Material code (see below) PP
- * Insert NRC

NRC Clamp Body *2-*PP-*RI-S/NRC

One NRC clamp body is consisting of two clamp halves.

- * STAUFF Group 2
- * Material code (see below) PP
- * Clamp Design RI-S/NRC

NRC Elastomer Insert
***RI-NRC-*12-*2-*SA73**

One NRC elastomer insert is consisting of two insert halves.

- * NRC Elastomer Insert RI-NRC
- * Exact outside diameter ØD1 (mm) 12
- * STAUFF Group 2
- * Material code SA73

Standard Materials

Polypropylene
 Colour: Black
 Material code: **PP**
Elastomer Insert
Thermoplastic Elastomer (73 Shore-A)
 Colour: Black
 Material code: **SA73**

See pages 178 / 179 for material properties and technical information.

 Alternative materials are available upon request.
 Please contact STAUFF for further information.

Special Materials
Please contact STAUFF for further details on fire-proof clamp body materials, tested and approved according to several international fire-protection standards (such as BS 6853, EN 45545-2, UL 94 and many more).

See pages 180 / 181 for material properties and technical information.

Additional outside diameters are available upon request. Please contact STAUFF for further information.

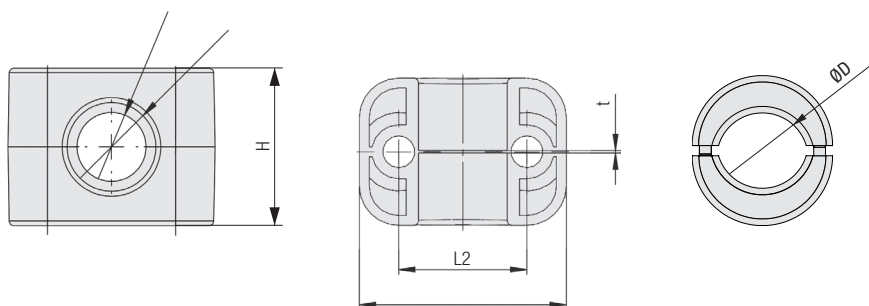
Product Features

- Designed for the noise and vibration reducing installation of pipes and tubes
- Suitable for the most common outside diameters from 6 to 42 mm and from ¼ to 1 ½ inch respectively
- Working principle based on a specially shaped, two-part elastomer insert, which mechanically absorbs vibration in the pipe or tube and as a result reduces noises arising to a minimum
- Elastomer insert is in particular distinguished by how little of its surface is in contact with the pipe or tube as well as with the clamp body
- Light tension of the elastomer insert in mounted condition provides the necessary clamping force
- Tongue-groove contour of the elastomer insert and the clamp body (which is reversed and thus diverges from standard DIN 3015 clamps with elastomer insert) enables the system to be used for the maximum range of outside diameters per clamp size, which contributes to flexibility, versatility and optimisation of the required installation space

Clamp Body for Conduit Hoses and Cable Inserts

Type CHC

A



Ordering Codes

Clamp Assembly

***3*17-*10/14-*PA-CHC*SA80-V0**

One assembly is consisting of one clamp body and one insert. (consisting of two halves).

- * STAUFF Group **3**
- * Nominal Size of the Conduit Hose **17**
- * Diameter Range Cable ØD (mm) **10/14**
- * Material code clamp body (see below) **PA-CHC**
- * Material code insert (see below) **SA80-V0**

CHC Clamp Body

***3*17-*PA-CHC**

One CHC Clamp Body is consisting of two clamp halves.

- * STAUFF Group **3**
- * Nominal Size of the Conduit Hose **17**
- * Material code clamp body (see below) **PA-CHC**

CHC Elastomer Insert

***RI-CHC-*10/14*3*SA80-V0**

One CHC Elastomer Insert is consisting of two insert halves.

- * CHC Elastomer insert **RI-CHC**
- * Diameter Range Cable ØD (mm) **10/14**
- * STAUFF Group **3**
- * Material code insert (see below) **SA80-V0**

Group	STAUFF DIN	Nominal Size Conduit Hose	Cable ØD (mm/m)	Ordering Codes (* = Material)			Dimensions (mm/m)									
				Clamp Assembly (Clamp Body + Insert)	Clamp Body (2 Halves)	CHC-Insert (2 Halves)	ØD1	ØD2	t	L1	L2	H	Width			
2	2	10		210-*												
		12	6 ... 8 .2431 8 ... 10 .3139	212-6/8-*-* 212-* 212-8/10-*-*	RI-CHC-6/8-2-* RI-CHC-8/10-2-*	13 .51	11 .43	0,5 .02	42 1.65	26 1.02	32 1.26	30 1.18				
3	3	17	7 ... 10 .2839 10 ... 14 .3955	317-7/10-*-* 317-10/14-*-*	317-*	RI-CHC-7/10-3-* RI-CHC-10/14-3-*	21,5 .85	18 .71	0,7 .03	50 1.97	33 1.30	35,5 1.40	30 1.18			
		23	14 ... 18 .5571 18 ... 20 .7179	423-14/18-*-* 423-18/20-*-*	423-*	RI-CHC-14/18-4-* RI-CHC-18/20-4-*	29 1.14	24,5 .96	0,7 .03	59 2.32	40 1.57	41,5 1.63	30 1.18			
5	5	29		529-*												
		36	20 ... 26,9 .79 ... 1.06 26,9 ... 33,7 1.06 ... 1.33	536-20/26.9-*-* 536-26.9/33.7-*-*	536-*	RI-CHC-20/26.9-5-* RI-CHC-26.9/33.7-5-*	35 1.38	30,5 1.20	1,0 .04	71 2.80	52 2.05	56,5 2.22	30 1.18			
6	6	48	33,7 ... 42 1.33 ... 1.65		648-*		55 2.17	49,5 1.95	1,0 .51	86 3.39	66 2.60	64,5 2.54	30 1.18			

Additional outside diameters are available upon request. Please contact STAUFF for further information.

Product Features

- Design of the inside surface of the clamp body prevents corrugated conduit hoses from sliding
- Elastomer Insert for the safe and damage-free installation of single cables as an option
- Chamfered edges avoid damaging of the conduit hoses
- Available for all commonly used nominal sizes
- Excellent weathering resistance, even under extreme conditions

Materials



Polyamide
Colour: Black
Material code: **PA-CHC**



fire-proof clamp body material made of Polyamide
Colour: Black
Material code: **PA-V0-CHC-BK**



Elastomer Insert Thermoplastic Elastomer (73 Shore-A)
Colour: Black
Material code: **SA73**



Elastomer Insert fire-proof clamp body material made of Thermoplastic Elastomer (86 Shore-A)
Colour: White
Material code: **SA80-V0**

Recommended Bolt Lengths (Socket Cap Screw IS)

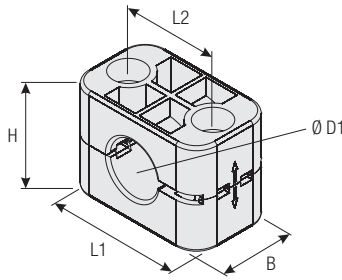
for use without Cover Plate DP, assembly with Weld Plate SP, Hexagon Rail Nut SM and Channel Rail Adaptor CRA.

Group	STAUFF	DIN	Metric ISO thread	Unified coarse (UNC) thread
2		2	M6 x 25	1/4-20 UNC x 1
3		3	M6 x 30	1/4-20 UNC x 1-1/8
4		4	M6 x 35	1/4-20 UNC x 1-3/8
5		5	M6 x 50	1/4-20 UNC x 2
6		6	M6 x 60	1/4-20 UNC x 2-1/2

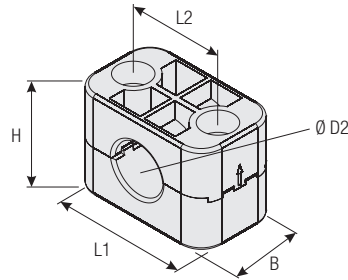
See page 30 for further information on ordering.

See pages 178 / 179 for material properties and technical information.

Alternative materials are available upon request. Please contact STAUFF for further information.



For Use with Regular Hose



For Use with Compact Hose
(Upper Clamp Half rotated by 180°)

Group	STAUFF	DIN	Outside Diameter Regular Hose		Outside Diameter Compact Hose		Ordering Codes (2 Clamp Halves)		Dimensions (mm/in)				
			Ø D1 (mm)	(in)	Ø D2 (mm)	(in)	(**-*-* = Material)	L1	L2	H		B	
3	3	19	.75	17,4	.69	319-**-*-CC-BK							
		22,2	.87	20,6	.81	322.2-**-*-CC-BK	50	33	35,5	34	30		
		25,4	1.00	23,7	.93	325.4-**-*-CC-BK	1.97	1.30	1.40	1.34	1.18		

Additional outside diameters are available upon request. Please contact STAUFF for further information.

Product Features

- Only one clamp body required for two different hose diameters (compact hose + regular hose)
- Rotate upper clamp half by 180° and use clamp body to fasten compact hoses instead of regular hoses
- Available for three different combinations of outside hose diameters
- Outer dimensions according to DIN 3015, Part 1
- Effective cost reduction due to lower inventories

Special Materials

Please contact STAUFF for further details on fire-proof clamp body materials, tested and approved according to several international fire-protection standards (such as BS 6853, EN 45545-2, UL 94 and many more).

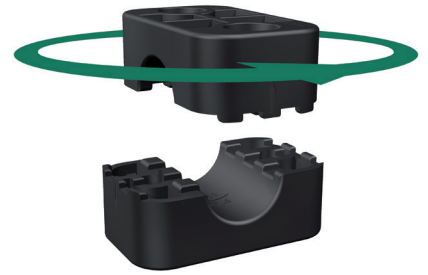
See pages 180 / 181 for material properties and technical information.

Ordering Codes

Clamp Body ***3*19-*PP-H-CC-BK**

One clamp body is consisting of two clamp halves.

- * STAUFF Group **3**
- * Outside diameter Ø D1 (mm) of regular hose **19**
- * Material code (see below) **PP-H-CC-BK**



A

Ordering Codes

One clamp body is consisting of two clamp halves.

Clamp Body 540-40-PP-VK
Rectangular design with a square of 40 mm x 40 mm / 1.57 in x 1.57 in

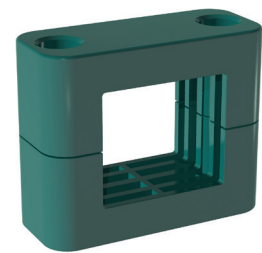
Clamp Body 540-36-PP-VK
Rectangular design with a square of 40 mm x 36 mm / 1.57 in x 1.42 in

Please replace PP by PA to order a clamp body made of Polyamide instead of Polypropylene.

Product Features

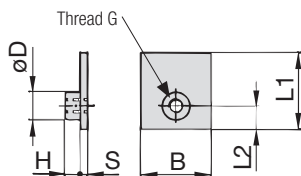
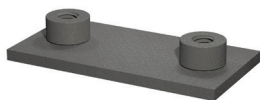
- Outer dimensions of clamp body according to Standard Series, STAUFF Group 5
- For proximity switches according to DIN EN 60947-5-2 or similar, rectangular construction, with a square of 40 mm x 40 mm / 1.57 in x 1.57 in or 40 mm x 36 mm / 1.57 in x 1.42 in
- For proximity switches according to DIN EN 60947-5-2 or similar, round construction, please use Standard Series clamp body, STAUFF Group 4, with the diameter required (e.g. 430-PP)
- Use with Hexagon Rail Nut SM and Mounting Rail TS to provide axial and horizontal position adjustment by loosening the bolts

Clamp Body - Rectangular Design Type VK

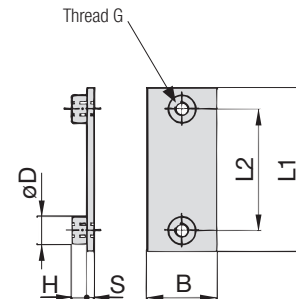


Single Weld Plate Type SP

A



STAUFF Group 1



STAUFF Group 1A to 8 (7M / 8M)

Ordering Codes

Weld Plate

***SP-*1-*M-*W2**

- * Single Weld Plate **SP**
- * STAUFF Group **1**
- * Thread code Metric ISO thread **M**
Unified coarse (UNC) thread **U**
- * Material code Carbon Steel, phosphated **W2**
Carbon Steel, zinc/nickel-plated **W3**

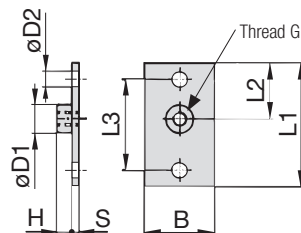
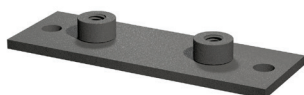
Stainless Steel V2A **W4**
1.4301 / 1.4305 (AISI 304 / 303)
Stainless Steel V4A **W5**
1.4401 / 1.4571 (AISI 316 / 316 Ti)

Aluminium EN AW-6060 **W85**
(Dimension S: 5 mm / .20 in)

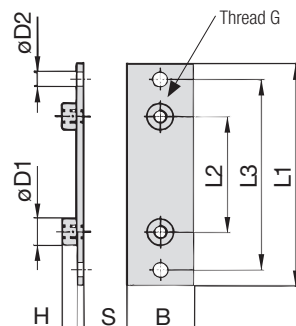
Group	STAUFF	DIN	Dimensions (mm/in)	Thread G	L1	L2	B	S	H	øD	Ordering Codes (Standard Options)
1	0		M6	31,5	10	30	3	6,5	12		SP-1-M-W2
			1/4-20 UNC	1.24	0.39	1.18	.12	.26	.47		SP-1-U-W2
1A	1		M6	36	20	30	3	6,5	12		SP-1A-M-W2
			1/4-20 UNC	1.42	0.79	1.18	.12	.26	.47		SP-1A-U-W2
2	2		M6	42	26	30	3	6,5	12		SP-2-M-W2
			1/4-20 UNC	1.65	1.02	1.18	.12	.26	.47		SP-2-U-W2
3	3		M6	50	33	30	3	6,5	12		SP-3-M-W2
			1/4-20 UNC	1.97	1.30	1.18	.12	.26	.47		SP-3-U-W2
4	4		M6	60	40	30	3	6,5	12		SP-4-M-W2
			1/4-20 UNC	2.36	1.57	1.18	.12	.26	.47		SP-4-U-W2
5	5		M6	71	52	30	3	6,5	12		SP-5-M-W2
			1/4-20 UNC	2.80	2.05	1.18	.12	.26	.47		SP-5-U-W2
6	6		M6	88	66	30	3	6,5	12		SP-6-M-W2
			1/4-20 UNC	3.46	2.60	1.18	.12	.26	.47		SP-6-U-W2
7	7		M6	122	94	30	5	6,5	12		SP-7-M-W2
			1/4-20 UNC	4.80	3.70	1.18	.20	.26	.47		SP-7-U-W2
8	8		M6	148	120	30	5	6,5	12		SP-8-M-W2
			1/4-20 UNC	5.83	4.72	1.18	.20	.26	.47		SP-8-U-W2
7M			M10	125	100	40	8	5,3	14		SP-7M-M-W2
			3/8-16 UNC	4.92	3.94	1.58	.31	.21	.55		SP-7M-U-W2
8M			M10	165	140	45	8	5,3	14		SP-8M-M-W2
			3/8-16 UNC	6.50	5.51	1.77	.31	.21	.55		SP-8M-U-W2

All threaded parts are available with Metric ISO thread or unified coarse (UNC) thread according to dimension table. Alternative materials and surface finishings are available upon request. Contact STAUFF for further information.

Elongated Weld Plate Type SPV



STAUFF Group 1



STAUFF Group 1A to 8 (7M / 8M)

Ordering Codes

Weld Plate

***SPV-*1-*M-*W2**

- * Elongated Weld Plate **SPV**
- * STAUFF Group **1**
- * Thread code Metric ISO thread **M**
Unified coarse (UNC) thread **U**
- * Material code Carbon Steel, phosphated **W2**
Carbon Steel, zinc/nickel-plated **W3**

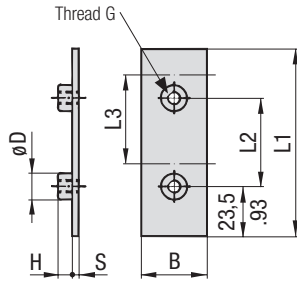
Stainless Steel V2A **W4**
1.4301 / 1.4305 (AISI 304 / 303)
Stainless Steel V4A **W5**
1.4401 / 1.4571 (AISI 316 / 316 Ti)

Group	STAUFF	DIN	Dimensions (mm/in)	Thread G	L1	L2	L3	B	S	H	øD1	øD2	Ordering Codes (Standard Options)
1	0		M6	58	24,5	44	30	3	6,5	12	6,5		SPV-1-M-W2
			1/4-20 UNC	2.28	.96	1.73	1.18	.12	.26	.47	.26		SPV-1-U-W2
1A	1		M6	64	20	50	30	3	6,5	12	6,5		SPV-1A-M-W2
			1/4-20 UNC	2.52	.79	1.97	1.18	.12	.26	.47	.26		SPV-1A-U-W2
2	2		M6	70	26	56	30	3	6,5	12	6,5		SPV-2-M-W2
			1/4-20 UNC	2.76	1.02	2.20	1.18	.12	.26	.47	.26		SPV-2-U-W2
3	3		M6	78	33	64	30	3	6,5	12	6,5		SPV-3-M-W2
			1/4-20 UNC	3.07	1.30	2.52	1.18	.12	.26	.47	.26		SPV-3-U-W2
4	4		M6	87	40	73	30	3	6,5	12	6,5		SPV-4-M-W2
			1/4-20 UNC	3.43	1.57	2.87	1.18	.12	.26	.47	.26		SPV-4-U-W2
5	5		M6	100	52	86	30	3	6,5	12	6,5		SPV-5-M-W2
			1/4-20 UNC	3.94	2.05	3.39	1.18	.12	.26	.47	.26		SPV-5-U-W2
6	6		M6	115	66	100	30	3	6,5	12	6,5		SPV-6-M-W2
			1/4-20 UNC	4.53	2.60	3.94	1.18	.12	.26	.47	.26		SPV-6-U-W2
7	7		M6	150	94	136	30	5	6,5	12	6,5		SPV-7-M-W2
			1/4-20 UNC	5.91	3.70	5.35	1.18	.20	.26	.47	.26		SPV-7-U-W2
8	8		M6	178	120	162	30	5	6,5	12	6,5		SPV-8-M-W2
			1/4-20 UNC	7.01	4.72	6.38	1.18	.20	.26	.47	.26		SPV-8-U-W2
7M			M10	180	155	100	40	8	15,7	17,8	12		SPV-7M-M-W2
			3/8-16 UNC	7.09	6.10	3.94	1.57	.31	.62	.70	.47		SPV-7M-U-W2
8M			M10	220	195	140	45	8	15,7	17,8	12		SPV-8M-M-W2
			3/8-16 UNC	8.66	7.68	5.51	1.77	.31	.62	.70	.47		SPV-8M-U-W2

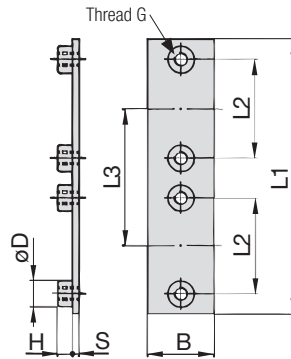
All threaded parts are available with Metric ISO thread or unified coarse (UNC) thread according to dimension table. Alternative materials and surface finishings are available upon request. Contact STAUFF for further information.

**Twin Weld Plate
for 2 Clamp Bodies
Type DSP**

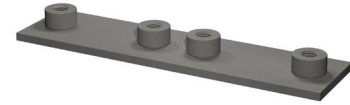
A



STAUFF Group 1



STAUFF Group 1A to 8



Group STAUFF	DIN	Dimensions (mm/in)								Ordering Codes (Standard Options)
		Thread G	L1	L2	L3	B	S	H	ØD	
1	0	M6	87	40	40	30	3	6.5	12	DSP-1-40-M-W2
		1/4-20 UNC	3.43	1.57	1.57	1.18	.12	.26	.47	DSP-1-40-U-W2
1A	1	M6	77	20	37	30	3	6.5	12	DSP-1A-37-M-W2
		1/4-20 UNC	3.03	.79	1.46	1.18	.12	.26	.47	DSP-1A-37-U-W2
2	2	M6	86	26	44	30	3	6.5	12	DSP-2-44-M-W2
		1/4-20 UNC	3.39	1.02	1.73	1.18	.12	.26	.47	DSP-2-44-U-W2
3	3	M6	102	33	52	30	3	6.5	12	DSP-3-52-M-W2
		1/4-20 UNC	4.02	1.30	2.05	1.18	.12	.26	.47	DSP-3-52-U-W2
4	4	M6	120	40	60	30	3	6.5	12	DSP-4-60-M-W2
		1/4-20 UNC	4.72	1.57	2.36	1.18	.12	.26	.47	DSP-4-60-U-W2
5	5	M6	145	52	75	30	3	6.5	12	DSP-5-75-M-W2
		1/4-20 UNC	5.71	2.05	2.95	1.18	.12	.26	.47	DSP-5-75-U-W2
6	6	M6	178	66	90	30	3	6.5	12	DSP-6-90-M-W2
		1/4-20 UNC	7.01	2.60	3.54	1.18	.12	.26	.47	DSP-6-90-U-W2

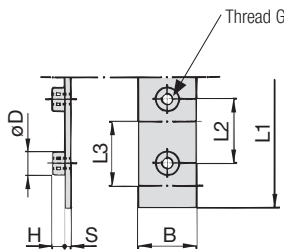
All threaded parts are available with Metric ISO thread or unified coarse (UNC) thread according to dimension table. Alternative materials and surface finishings are available upon request. Contact STAUFF for further information.

Ordering Codes

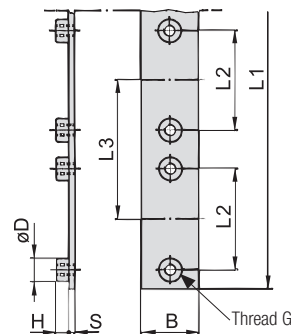
Weld Plate *DSP-*1-*40-*M-*W2

- * Twin Weld Plate for 2 Clamp Bodies **DSP**
- * STAUFF Group **1**
- * Pipe center spacing L3 (mm) **40**
- * Thread code Metric ISO thread **M**
Unified coarse (UNC) thread **U**
- * Material code Carbon Steel, phosphated **W2**
Carbon Steel, zinc/nickel-plated **W3**
Stainless Steel V2A **W4**
1.4301 / 1.4305 (AISI 304 / 303) **W4**
Stainless Steel V4A **W5**
1.4401 / 1.4571 (AISI 316 / 316 Ti) **W5**

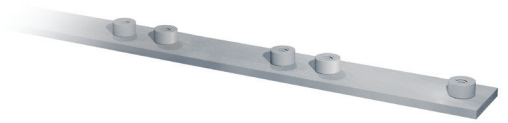
**Group Weld Plate
for 5 or 10 Clamp Bodies
Type RAP**



STAUFF Group 1



STAUFF Group 1A to 8



Group STAUFF	DIN	Dimensions (mm/in)								Ordering Codes (Standard Options)
		Thread G	L1	L2	L3	B	S	H	ØD	
1	0	M6	314	31	31	30	4	6.5	12	RAP-1-31-10-M-W1
		1/4-20 UNC	12.36	1.22	1.22	1.18	.16	.26	.47	RAP-1-31-10-U-W1
1A	1	M6	373	20	37	30	4	6.5	12	RAP-1A-37-10-M-W1
		1/4-20 UNC	14.69	.79	1.46	1.18	.16	.26	.47	RAP-1A-37-10-U-W1
2	2	M6	442	26	44	30	4	6.5	12	RAP-2-44-10-M-W1
		1/4-20 UNC	17.40	1.02	1.73	1.18	.16	.26	.47	RAP-2-44-10-U-W1
3	3	M6	521	33	52	30	4	6.5	12	RAP-3-52-10-M-W1
		1/4-20 UNC	20.51	1.30	2.05	1.18	.16	.26	.47	RAP-3-52-10-U-W1
4	4	M6	300	40	60	30	4	6.5	12	RAP-4-60-5-M-W1
		1/4-20 UNC	11.81	1.57	2.36	1.18	.16	.26	.47	RAP-4-60-5-U-W1
5	5	M6	378	52	75	30	4	6.5	12	RAP-5-75-5-M-W1
		1/4-20 UNC	14.88	2.05	2.95	1.18	.16	.26	.47	RAP-5-75-5-U-W1
6	6	M6	450	66	90	30	4	6.5	12	RAP-6-90-5-M-W1
		1/4-20 UNC	17.72	2.60	3.54	1.18	.16	.26	.47	RAP-6-90-5-U-W1

All threaded parts are available with Metric ISO thread or unified coarse (UNC) thread according to dimension table. Alternative materials and surface finishings are available upon request. Contact STAUFF for further information.

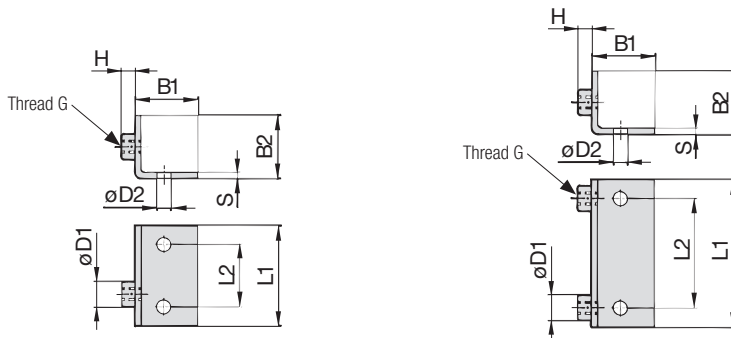
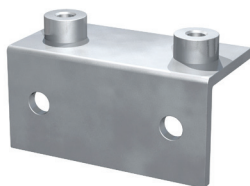
Dimensional drawings: All dimensions in mm (in).

Ordering Codes

Weld Plate *RAP-*1-*31-*10-*M-*W1

- * Group Weld Plate for 5 or 10 Clamp Bodies **RAP**
- * STAUFF Group **1**
- * Pipe center spacing L3 (mm) **31**
- * Number of clamps **10**
- * Thread code Metric ISO thread **M**
Unified coarse (UNC) thread **U**
- * Material code Carbon Steel, phosphated **W2**
Carbon Steel, zinc/nickel-plated **W3**
Stainless Steel V2A **W4**
1.4301 / 1.4305 (AISI 304 / 303) **W4**
Stainless Steel V4A **W5**
1.4401 / 1.4571 (AISI 316 / 316 Ti) **W5**

Angled Weld Plate Type WSP



STAUFF Group 1

STAUFF Group 1A to 6 (7M / 8M)

Ordering Codes

Weld Plate

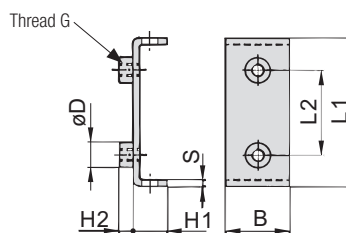
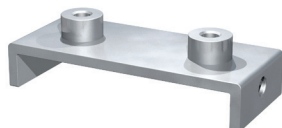
***WSP-*1-*M-*W2**

- * Angled Weld Plate **WSP**
- * STAUFF Group **1**
- * Thread code Metric ISO thread **M**
Unified coarse (UNC) thread **U**
- * Material code Carbon Steel, phosphated **W2**
Carbon Steel, zinc/nickel-plated **W3**
Stainless Steel V2A **W4**
1.4301 / 1.4305 (AISI 304 / 303) **W4**
Stainless Steel V4A **W5**
1.4401 / 1.4571 (AISI 316 / 316 Ti) **W5**

Group STAUFF	DIN	Dimensions (mm/in)								Ordering Codes (Standard Options)	
		Thread G	L1	L2	B1	B2	S	H	ØD1		ØD2
1	0	M6	30	14	30	30	3	6,5	12	6,5	WSP-1-M-W2
		1/4-20 UNC	1.18	.55	1.18	1.18	.12	.26	.47	.26	WSP-1-U-W2
1A	1	M6	36	20	30	30	3	6,5	12	6,5	WSP-1A-M-W2
		1/4-20 UNC	1.26	.79	1.18	1.18	.12	.26	.47	.26	WSP-1A-U-W2
2	2	M6	42	26	30	30	3	6,5	12	6,5	WSP-2-M-W2
		1/4-20 UNC	1.65	1.02	1.18	1.18	.12	.26	.47	.26	WSP-2-U-W2
3	3	M6	50	33	30	30	3	6,5	12	6,5	WSP-3-M-W2
		1/4-20 UNC	1.97	1.30	1.18	1.18	.12	.26	.47	.26	WSP-3-U-W2
4	4	M6	60	40	30	30	3	6,5	12	6,5	WSP-4-M-W2
		1/4-20 UNC	2.36	1.57	1.18	1.18	.12	.26	.47	.26	WSP-4-U-W2
5	5	M6	70	52	30	30	3	6,5	12	6,5	WSP-5-M-W2
		1/4-20 UNC	2.76	2.05	1.18	1.18	.12	.26	.47	.26	WSP-5-U-W2
6	6	M6	88	66	30	30	3	6,5	12	6,5	WSP-6-M-W2
		1/4-20 UNC	3.46	2.60	1.18	1.18	.12	.26	.47	.26	WSP-6-U-W2
7M		M10	125	100	50	50	8	5,3	14	6,5	WSP-7M-M-W2
		3/8-16 UNC	4.92	3.94	1.97	1.97	.31	.21	.55	.26	WSP-7M-U-W2
8M		M10	165	140	50	50	8	5,3	14	6,5	WSP-8M-M-W2
		3/8-16 UNC	6.50	5.51	1.97	1.97	.31	.21	.55	.26	WSP-8M-U-W2

All threaded parts are available with Metric ISO thread or unified coarse (UNC) thread according to dimension table. Alternative materials and surface finishings are available upon request. Contact STAUFF for further information.

Bridge Weld Plate Type BSP



Ordering Codes

Weld Plate

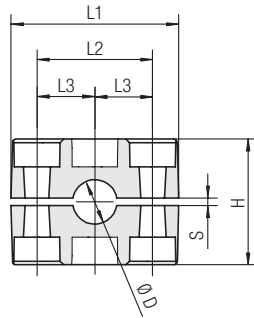
***BSP-*1A-*M-*W2**

- * Bridge Weld Plate **BSP**
- * STAUFF Group **1A**
- * Thread code Metric ISO thread **M**
Unified coarse (UNC) thread **U**
- * Material code Carbon Steel, phosphated **W2**
Carbon Steel, zinc/nickel-plated **W3**
Stainless Steel V2A **W4**
1.4301 / 1.4305 (AISI 304 / 303) **W4**
Stainless Steel V4A **W5**
1.4401 / 1.4571 (AISI 316 / 316 Ti) **W5**

Group STAUFF	DIN	Dimensions (mm/in)								Ordering Codes (Standard Options)	
		Thread G	L1	L2	B	S	H1	H2	ØD		
1A	1	M6	48	20	30	3	13	6,5	12	6,5	BSP-1A-M-W2
		1/4-20 UNC	1.89	.79	1.18	.12	.52	.26	.47	.26	BSP-1A-U-W2
2	2	M6	54	26	30	3	13	6,5	12	6,5	BSP-2-M-W2
		1/4-20 UNC	2.13	1.02	1.18	.12	.52	.26	.47	.26	BSP-2-U-W2
3	3	M6	62	33	30	3	13	6,5	12	6,5	BSP-3-M-W2
		1/4-20 UNC	2.44	1.30	1.18	.12	.52	.26	.47	.26	BSP-3-U-W2
4	4	M6	71	40	30	3	13	6,5	12	6,5	BSP-4-M-W2
		1/4-20 UNC	2.80	1.57	1.18	.12	.52	.26	.47	.26	BSP-4-U-W2
5	5	M6	85	52	30	3	13	6,5	12	6,5	BSP-5-M-W2
		1/4-20 UNC	3.35	2.05	1.18	.12	.52	.26	.47	.26	BSP-5-U-W2
6	6	M6	98	66	30	3	13	6,5	12	6,5	BSP-6-M-W2
		1/4-20 UNC	3.86	2.60	1.18	.12	.52	.26	.47	.26	BSP-6-U-W2

All threaded parts are available with Metric ISO thread or unified coarse (UNC) thread according to dimension table. Alternative materials and surface finishings are available upon request. Contact STAUFF for further information.



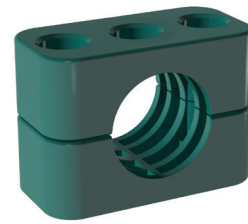


STAUFF Group 5

Group	Outside Diameter Pipe / Tube Ø D	Nominal Bore Pipe	Copper Tube ASTM B88	Ordering Codes (2 Clamp Halves) (** = Material)	Dimensions (mm/in)					
					L1	L2	L3	H	S min.	Width
5	20	1/2	3/4	520-**-MGR	71	52	26	58	0,8	30
	21,3			521.3-**-MGR						
	22			522-**-MGR						
	23			523-**-MGR						
	25	525-**-MGR								
	26,9	3/4	526.9-**-MGR							
	28	528-**-MGR								
	30	530-**-MGR								
	32	1-1/4	532-**-MGR							
	33,7	1	533.7-**-MGR							
	35	1-1/4	535-**-MGR							
	38	1-1/2	538-**-MGR							
	40	540-**-MGR								
	42	1-1/4	542-**-MGR							

Additional outside diameters are available upon request. Please contact STAUFF for further information.

Clamp Body for Multi-Group Weld Plate Type MGR



Ordering Codes

Clamp Body ***5*20-PP-MGR**

One clamp body is consisting of two clamp halves.

- * STAUFF Group **5**
- * Exact outside diameter Ø D1 (mm) **20**
- * Material code (see below) **PP-MGR**

Standard Materials

Polypropylene
Colour: Green
Material code: **PP-MGR**

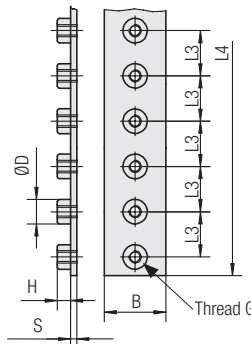
Polyamide
Colour: Black
Material code: **PA-MGR**

See pages 178 / 179 for properties and technical information.

Multi-Group Weld Plates (type RAP-MGR) are designed to be used in combination with Standard Series clamp bodies, STAUFF Group 2 (regular types, see pages 14 ff.) covering a diameter range from 8 mm / .31 in to 18 mm / .71 in, as well as Standard Series clamp bodies, STAUFF Group 5 (type MGR, see above) covering a diameter range from 20 mm / .79 in to 42 mm / 1.65 in. Thus, all Standard Series metal parts (bolts, cover plates) of these groups can be used.



Multi-Group Weld Plate RAP-MGR-25-312-M-W1



Number of Weld Nuts	Dimensions (mm/in)							Ordering Codes (Standard Options)
	Thread G	L3	L4	B	S	H	ØD	
6	M6	26	156	30	4	6,5	12	RAP-MGR-25-156-M-W1
	1/4-20 UNC	1.02	6.14	1.18	.16	.26	.47	RAP-MGR-25-156-U-W1
9	M6	26	234	30	4	6,5	12	RAP-MGR-25-234-M-W1
	1/4-20 UNC	1.02	9.21	1.18	.16	.26	.47	RAP-MGR-25-234-U-W1
12	M6	26	312	30	4	6,5	12	RAP-MGR-25-312-M-W1
	1/4-20 UNC	1.02	12.28	1.18	.16	.26	.47	RAP-MGR-25-312-U-W1
15	M6	26	390	30	4	6,5	12	RAP-MGR-25-390-M-W1
	1/4-20 UNC	1.02	15.35	1.18	.16	.26	.47	RAP-MGR-25-390-U-W1
20	M6	26	520	30	4	6,5	12	RAP-MGR-25-520-M-W1
	1/4-20 UNC	1.02	20.47	1.18	.16	.26	.47	RAP-MGR-25-520-U-W1
27	M6	26	700	30	4	6,5	12	RAP-MGR-25-700-M-W1
	1/4-20 UNC	1.02	27.55	1.18	.16	.26	.47	RAP-MGR-25-700-U-W1

Cover a diameter range from 8 mm (.31 in) to 42 mm (1.65 in) with only one Group Weld Plate!

All threaded parts are available with Metric ISO thread or unified coarse (UNC) thread according to dimension table. Alternative materials and surface finishings are available upon request. Contact STAUFF for further information.

Multi-Group Weld Plate for Clamp Body Sizes 2 and 5 (Type MGR) Type RAP-MGR



Ordering Codes

Weld Plate ***RAP-MGR-25-156-M-W1**

- * Multi Group Weld Plate **RAP-MGR**
- * Suitable for STAUFF Group 2 and 5 (only type MGR) **25**
- * Length L4 (mm)

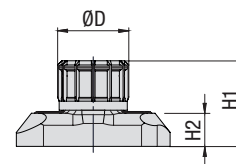
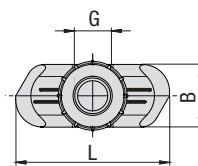
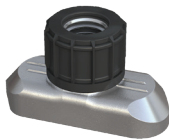
156 (with 6 weld nuts)	156
234 (with 9 weld nuts)	234
312 (with 12 weld nuts)	312
390 (with 15 weld nuts)	390
520 (with 20 weld nuts)	520
700 (with 27 weld nuts)	700
- * Thread code

Metric ISO thread	M
Unified coarse (UNC) thread	U
- * Material code

Carbon Steel, uncoated	W1
Stainless Steel V4A 1.4401 / 1.4571 (AISI 316 / 316 Ti)	W5

Hexagon Rail Nut
(for Use with Mounting Rail TS)
Type SM

A



Ordering Codes

Hexagon Rail Nut *SM-*1-8/1D-*M-*W3

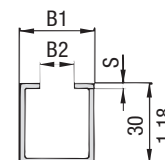
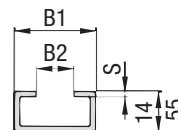
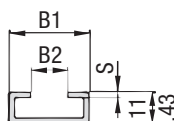
- * Hexagon Rail Nut **SM**
- * STAUFF Group 1 to 8 (DIN Group 0 to 8) **1-8/1D**
- * Thread code Metric ISO thread **M**
Unified coarse (UNC) thread **U**
- * Material code Carbon Steel, zinc/nickel-plated **W3**
Stainless Steel V2A 1.4301 / 1.4305 (AISI 304 / 303) **W4**
Stainless Steel V4A 1.4401 / 1.4571 (AISI 316 / 316 Ti) **W5**

Group STAUFF	DIN	Dimensions (mm/in)						Ordering Codes (Standard Options)
		Thread G	L	B	H1	H2	ØD	
1	0							
1A	1							
2	2							
3	3							
4	4	M6 1/4-20 UNC	25,5 1.00	10,4 .41	14,2 .56	5,5 .22	12 .47	SM-1-8/1D-M-W3 SM-1-8/1D-U-W3
5	5							
6	6							
7	7							
8	8							

Hexagon Rail Nuts, type SM-1-8/1D are also suitable for Twin Series, STAUFF Group 1D.

All threaded parts are available with Metric ISO thread or unified coarse (UNC) thread according to dimension table. Alternative materials and surface finishings are available upon request. Contact STAUFF for further information.

Mounting Rail
(for Use with Hexagon Rail Nut SM)
Type TS



Mounting Rail TS-11

Mounting Rail TS-14

Mounting Rail TS-30

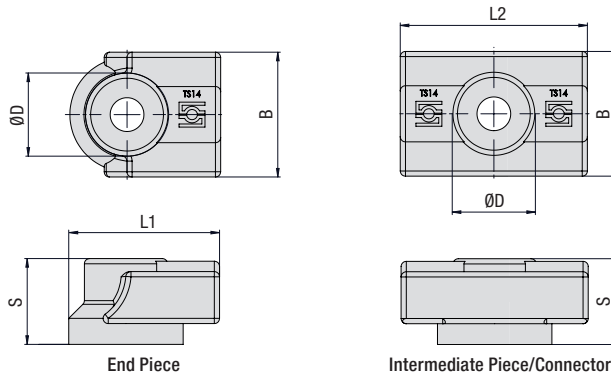
Ordering Codes

Mounting Rail *TS-*11-*1M-*W1

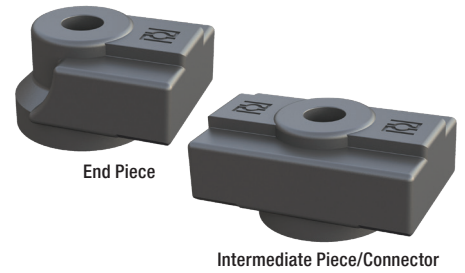
- * Mounting Rail **TS**
- * Height of rail 11 mm / .43 in **11**
14 mm / .55 in **14**
30 mm / 1.18 in **30**
- * Length of rail 1 m / 3.28 ft **1M**
2 m / 6.56 ft **2M**
Alternative lengths available upon request. Contact STAUFF for further information.
- * Material code Carbon Steel, uncoated **W1**
Carbon Steel, hot-dip galvanised **W98**
Stainless Steel V2A 1.4301 / 1.4305 (AISI 304 / 303) **W4**
Stainless Steel V4A 1.4401 / 1.4571 (AISI 316 / 316 Ti) **W5**

Group STAUFF	DIN	Dimensions (mm/in)			Ordering Codes (Standard Options)	
		B1	B2	S	Length of Rail: 1 m / 3.28ft	Length of Rail: 2 m / 6.56ft
1	0					
1A	1				Height 11 mm / .43 in TS-11-1M-W1	Height 11 mm / .43 in TS-11-2M-W1
2	2					
3	3					
4	4	28 1.10	11 .43	2 .08	Height 14 mm / .55 in TS-14-1M-W1	Height 14 mm / .55 in TS-14-2M-W1
5	5					
6	6					
7	7				Height 30 mm / 1.18 in TS-30-1M-W1	Height 30 mm / 1.18 in TS-30-2M-W1
8	8					

Mounting Rails, type TS-11/14/30 are suitable for all Standard Series and Twin Series group sizes. Alternative materials and surface finishings are available upon request. Contact STAUFF for further information.



Fastening Adaptor
(for Use with Mounting Rail TS)
Type SWG-MRA



A

Group STAUFF	DIN	Dimensions (mm/in)					Ordering Code (End Piece)	Ordering Code (Intermediate Piece/Connector)
		ØD	L1	L2	B	S		
1 bis 8	0 bis 8	16 .63	29 1.14	36 1.42	24 .94	16,5 .65	SWG-MRA-TS14-S-A	SWG-MRA-TS14-D-A

Fastening Adaptor, type SWG-MRA are also suitable for Twin Series.
Alternative materials and surface finishings are available upon request. Contact STAUFF for further information.

Ordering Code

Fastening Adaptor

***SWG-MRA-*TS14-*S-*A**

* Fastening Adaptor	SWG-MRA
* for Mounting Rail TS14	TS14
* End Piece	S
Intermediate Piece/Connector	D
* Version	A

Product Features

Fastening Adaptor for Direct Screw Mounting of STAUFF Mounting Rails Type TS-14 with Weld Studs M6 and Bolts M6 or 1/4–20 UNC (Support Sleeve / Washer Recommended)

Material: Polyamide

Instructions for Use

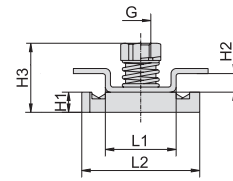
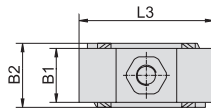
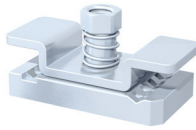
- Are pressed into the side of the Mounting Rail TS-14 and bolted to the installation
- Positioning of the mounting rail 2 mm above the installation
- Initially designed for use with weld studs with internal thread M6
- Can also be used with M6 bolts – depending on the load, an internal support sleeve (e.g. 1130023624 LBBU-HUE-1/1D-SP-M6/U1/4-W3) and/or washer may be required
- Maximum recommended distance between two fastening adaptors of 222 mm (corresponds to a length of the mounting rail of 200 mm)
- In case of doubt, please consult STAUFF for information on maximum static and dynamic loads



Channel Rail Adaptor

(for Use with Various Channel Rails)

Type CRA



Ordering Codes

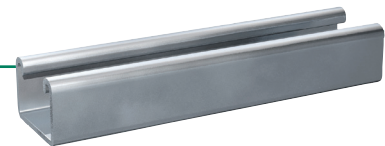
Adaptor *CRA-*1-8/1D-*M-*W3

- * Channel Rail Adaptor **CRA**
- * STAUFF Group 1 to 8 (DIN Group 0 to 8) **1-8/1D**
- * Thread code Metric ISO thread **M**
Unified coarse (UNC) thread **U**
- * Material code Carbon Steel, zinc/nickel-plated **W3**
Stainless Steel V4A 1.4401 / 1.4571 (AISI 316 / 316 Ti) **W5**

Group STAUFF	DIN	Dimensions (mm/in)										Ordering Codes (Standard Options)
		Thread G	L1	L2	L3	B1	B2	H1	H2	H3		
1	0											
1A	1											
2	2											
3	3											
4	4	M6 1/4-20 UNC	21 .83	35 1.38	40 1.57	16 .63	19 .75	6 .24	5,5 .22	20,5 .81		CRA-1-8/1D-M-W3 CRA-1-8/1D-U-W3
5	5											
6	6											
7	7											
8	8											
7M		M8	21	35	38	80	19	9	5,5	23,5		CRA-7-8ML-M-W3
8M		5/16-18 UNC	.83	1.38	1.50	3.15	.75	.3	.22	.93		CRA-7-8ML-U-W3

The Channel Rail Adaptor, type CRA 1-8/1D is also suitable for Twin Series, STAUFF Group 1D.

All threaded parts are available with Metric ISO thread or unified coarse (UNC) thread according to dimension table. Alternative materials and surface finishings are available upon request. Contact STAUFF for further information.

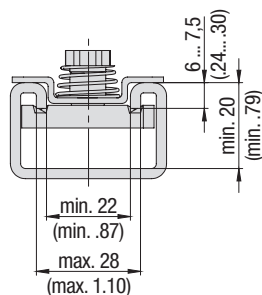


Compatibility with Channel Rails

The STAUFF Channel Rail Adaptor, type CRA, is suitable for various channel rails, including the following types:

HALFEN	HILTI	UNISTRUT®	STAUFF (Cushion Clamp Series)
HM 41/41	MQ-21, MQ-41, MQ-52, MQ-72	P1000, P1000T, P1000V, P1000VT, P1001	SCS-048-1-PL, SCS-048-1-GR
HZA 41/22	MQ-21U, MQ-41U, MQ-72U	P2000, P2000T	SCS-120-1-PL, SCS-120-1-GR
HZM 41/41	MQ-21D, MQ-41D, MQ-52-72D	P3003, P3003T, P3300V, P3300VT, P3301	See page 149 for technical information.
HZM 41/22		P4000, P4000T	
HL 41/41, HL 41/B2		P5000, P5000T, P5001, P5500, P5500T, P5501	

To check the compatibility with additional types of channel rail, please compare the dimensions with the following drawing before use.



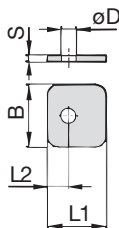
Basic dimensional requirements for channel rails to be used with STAUFF Channel Rail Adaptors, type CRA

Dimensional drawings: All dimensions in mm (in).

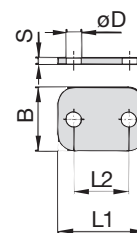


Cover Plate Type DP

A



STAUFF Group 1



STAUFF Group 1A to 8 (7M / 8M)

Ordering Codes

Cover Plate

***DP-*1-*W3**

* Cover Plate		DP
* STAUFF Group		1
* Material code	Carbon Steel, zinc/nickel-plated	W3
	Stainless Steel V2A	W4
	1.4301 / 1.4305 (AISI 304 / 303)	
	Stainless Steel V4A	W5
	1.4401 / 1.4571 (AISI 316 / 316 Ti)	
	Aluminium EN AW-6060	W85

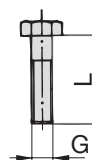
Group STAUFF	DIN	Dimensions (mm/in)					ØD	Ordering Codes (Standard Options)
		L1	L2	B	S			
1	0	28	9,5	30	3	7	DP-1-W3	
		1.10	.37	1.18	.12	.28		
1A	1	34	20	30	3	7	DP-1A-W3	
		1.34	.79	1.18	.12	.28		
2	2	40,5	26	30	3	7	DP-2-W3	
		1.59	1.02	1.18	.12	.28		
3	3	48	33	30	3	7	DP-3-W3	
		1.89	1.30	1.18	.12	.28		
4	4	57	40	30	3	7	DP-4-W3	
		2.24	1.57	1.18	.12	.28		
5	5	70	52	30	3	7	DP-5-W3	
		2.76	2.05	1.18	.12	.28		
6	6	86	66	30	3	7	DP-6-W3	
		3.39	2.60	1.18	.12	.28		
7	7	118	94	30	5	7	DP-7-W3	
		4.65	3.70	1.18	.20	.28		
8	8	144	120	30	5	7	DP-8-W3	
		5.67	4.72	1.18	.20	.28		
7M		125	100	40	8	11	DP-7M-W3	
		4.92	3.94	1.57	.31	.43		
8M		165	140	45	8	11	DP-8M-W3	
		6.50	5.51	1.77	.31	.43		

Alternative materials and surface finishings are available upon request. Contact STAUFF for further information.

Hexagon Head Bolt

(for Use with Cover Plate DP)

Type AS



Hexagon Head Bolt AS (according to DIN 931 / 933 or ANSI / ASME B18.2.1.)
Dimensions applicable only when used with Cover Plate DP

Ordering Codes

Hexagon Head Bolt

***AS-*M6x30-*W3**

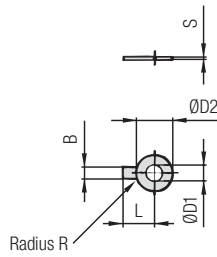
* Type of bolt	Hexagon Head Bolt (according to DIN 931 / 933 or ANSI / ASME B18.2.1.)	AS
* Thread type and size acc. to dimension table	M6x30	
* Material code	Carbon Steel, zinc/nickel-plated	W3
	Stainless Steel V2A	W4
	1.4301 / 1.4305 (AISI 304 / 303)	
	Stainless Steel V4A	W5
	1.4401 / 1.4571 (AISI 316 / 316 Ti)	

Group STAUFF	DIN	Dimensions (mm/in)		Ordering Codes (Standard Options)
		Thread	G x L	
1	0	M6 x 30		AS-M6x30-W3
		1/4-20 UNC x 1-1/4		AS-1/4-20UNCx1-1/4-W3
1A	1	M6 x 30		AS-M6x30-W3
		1/4-20 UNC x 1-1/4		AS-1/4-20UNCx1-1/4-W3
2	2	M6 x 35		AS-M6x35-W3
		1/4-20 UNC x 1-3/8		AS-1/4-20UNCx1-3/8-W3
3	3	M6 x 40		AS-M6x40-W3
		1/4-20 UNC x 1-1/2		AS-1/4-20UNCx1-1/2-W3
4	4	M6 x 45		AS-M6x45-W3
		1/4-20 UNC x 1-7/8		AS-1/4-20UNCx1-7/8-W3
5	5	M6 x 60		AS-M6x60-W3
		1/4-20 UNC x 2-3/8		AS-1/4-20UNCx2-3/8-W3
6	6	M6 x 70		AS-M6x70-W3
		1/4-20 UNC x 2-3/4		AS-1/4-20UNCx2-3/4-W3
7	7	M6 x 100		AS-M6x100-W3
		1/4-20 UNC x 4		AS-1/4-20UNCx4-W3
8	8	M6 x 125		AS-M6x125-W3
		1/4-20 UNC x 4-7/8		AS-1/4-20UNCx4-7/8-W3
7M		M10 x 110		AS-M10x110-W3
		3/8-16 UNC x 4-1/3		AS-3/8-16 UNC x 4-1/3-W3
8M		M10 x 145		AS-M10x145-W3
		3/8-16 UNC x 5-6/8		AS-3/8-16 UNC x 5-6/8-W3

All threaded parts are available with Metric ISO thread or unified coarse (UNC) thread according to dimension table. Alternative materials and surface finishings are available upon request. Contact STAUFF for further information.

Safety Washer
(for Use with Hexagon Head Bolt AS)
Type SI (DIN 93)

A



Safety Washer SI

(Bend longer tab down towards the side of the clamp body and one side up towards one of the flats of the hexagon head bolt)

Group STAUFF	DIN	Dimensions (mm / in)							Ordering Codes (Standard Options)
		ØD1	B	ØD2	L	R	S		
1 to 8	0 to 8	6,4	7	19	18	4	0,5	SI-6.4-DIN93-W3	
		.25	.28	.75	.71	.16	.02		

Safety Washers, type SI are used as locking devices to prevent Hexagon Head Bolts, type AS from loosening. Safety Washers, type SI are suitable for all Standard Series group sizes.

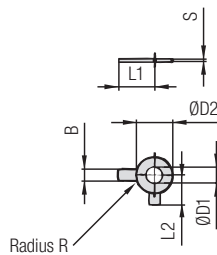
Alternative materials and surface finishings are available upon request. Contact STAUFF for further information.

Ordering Codes

Safety Washer *SI-*6.4-*DIN93-*W3

- * Type of washer Safety washer with 1 tab (according to DIN 93) **SI-6.4-DIN93**
- * Material code Carbon Steel, zinc/nickel-plated **W3**
Stainless Steel V4A **W5**
1.4401 / 1.4571 (AISI 316 / 316 Ti)

Safety Washer
(for Use with Hexagon Head Bolt AS)
Type SI (DIN 463)



Safety Washer SI

(Bend longer tab down towards the side of the clamp body and shorter tab up towards one of the flats of the hexagon head bolt)

Group STAUFF	DIN	Dimensions (mm / in)							Ordering Codes (Standard Options)
		ØD1	B	ØD2	L1	L2	R	S	
1 to 8	0 to 8	6,4	7	12	18	9	4	0,5	SI-6.4-DIN463-W3
		.25	.28	.47	.71	.35	.16	.02	

Safety Washers, type SI are used as locking devices to prevent Hexagon Head Bolts, type AS from loosening. Safety Washers, type SI are suitable for all Standard Series group sizes.

Alternative materials and surface finishings are available upon request. Contact STAUFF for further information.

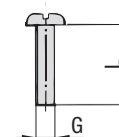
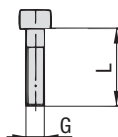
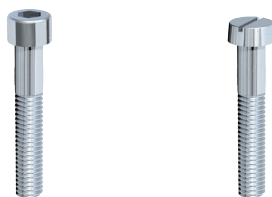
Ordering Codes

Safety Washer *SI-*6.4-*DIN463-*W3

- * Type of washer Safety washer with 2 tabs (according to DIN 463) **SI-6.4-DIN463**
- * Material code Carbon Steel, zinc/nickel-plated **W3**
Stainless Steel V4A **W5**
1.4401 / 1.4571 (AISI 316 / 316 Ti)



Socket Cap Screw **Slotted Head Screw**
Type IS **Type LI**



Socket Cap Screw IS

(according to ISO 4762 or ANSI / ASME B18.3)

Dimensions applicable only when used without Cover Plate DP

Slotted Head Screw LI

(according to ISO 1207 or ANSI / ASME B18.6.3)

Dimensions applicable only when used without Cover Plate DP

Ordering Codes

Socket Cap Screw ***IS-*M6x30-*W3**
Slotted Head Screw ***LI-*M6x30-*W3**

* Type of bolt Socket Cap Screw (according to ISO 4762 or ANSI / ASME B18.3) **IS**
Slotted Head Screw (according to ISO 1207 or ANSI / ASME B18.6.3) **LI**

Please note: Socket cap screws IS and slotted head screws LI have to be used in conjunction with washers US, which are available separately.

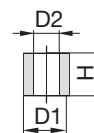
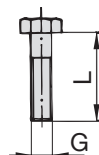
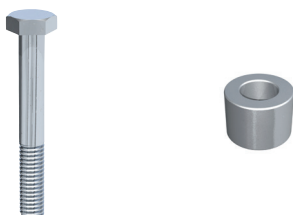
* Thread type and size acc. to dimension table **M6x30**

* Material code Carbon Steel, zinc/nickel-plated **W3**
Stainless Steel V2A **W4**
1.4301 / 1.4305 (AISI 304 / 303)
Stainless Steel V4A **W5**
1.4401 / 1.4571 (AISI 316 / 316 Ti)

Group STAUFF	DIN	Dimensions (mm/m) Thread G x L	Ordering Codes (Standard Options)	
			Socket Cap Screws	Slotted Head Screws
1	0	M6 x 20	IS-M6x20-W3	LI-M6x20-W3
		1/4-20 UNC x 3/4	IS-1/4-20UNCx3/4-W3	LI-1/4-20UNCx3/4-W3
1A	1	M6 x 20	IS-M6x20-W3	LI-M6x20-W3
		1/4-20 UNC x 3/4	IS-1/4-20UNCx3/4-W3	LI-1/4-20UNCx3/4-W3
2	2	M6 x 25	IS-M6x25-W3	LI-M6x25-W3
		1/4-20 UNC x 1	IS-1/4-20UNCx1-W3	LI-1/4-20UNCx1-W3
3	3	M6 x 30	IS-M6x30-W3	LI-M6x30-W3
		1/4-20 UNC x 1-1/8	IS-1/4-20UNCx1-1/8-W3	LI-1/4-20UNCx1-1/8-W3
4	4	M6 x 35	IS-M6x35-W3	LI-M6x35-W3
		1/4-20 UNC x 1-3/8	IS-1/4-20UNCx1-3/8-W3	LI-1/4-20UNCx1-3/8-W3
5	5	M6 x 50	IS-M6x50-W3	LI-M6x50-W3
		1/4-20 UNC x 2	IS-1/4-20UNCx2-W3	LI-1/4-20UNCx2-W3
6	6	M6 x 60	IS-M6x60-W3	LI-M6x60-W3
		1/4-20 UNC x 2-1/2	IS-1/4-20UNCx2-1/2-W3	LI-1/4-20UNCx2-1/2-W3
7	7	M6 x 90	IS-M6x90-W3	ON REQUEST ONLY
		1/4-20 UNC x 3-3/8	IS-1/4-20UNCx3-3/8-W3	
8	8	M6 x 110	IS-M6x110-W3	ON REQUEST ONLY
		1/4-20 UNC x 4-3/8	IS-1/4-20UNCx4-3/8-W3	

All threaded parts are available with Metric ISO thread or unified coarse (UNC) thread according to dimension table. Alternative materials and surface finishings are available upon request. Contact STAUFF for further information.

Hexagon Head Bolt **Insert**
Type AS **Type ES / EP**



Hexagon Head Bolt AS

(according to DIN 931 / 933 or ANSI / ASME B18.2.1.)

Dimensions applicable only when used with Inserts EP / ES

Insert EP (Polypropylene)

Insert ES-W3 (Steel, zinc/nickel-plated)

Insert ES-W5 (Stainless Steel V4A)

Ordering Codes

Hexagon Head Bolt ***AS-*M6x27-*W3**

* Type of bolt Hexagon Head Bolt (according to DIN 931 / 933 or ANSI / ASME B18.2.1.) **AS**

* Thread type and size acc. to dimension table **M6x27**

* Material code Carbon Steel, zinc/nickel-plated **W3**
Stainless Steel V2A **W4**
1.4301 / 1.4305 (AISI 304 / 303)
Stainless Steel V4A **W5**
1.4401 / 1.4571 (AISI 316 / 316 Ti)

Group STAUFF	DIN	Dimensions (mm/m) Thread G x L	Ordering Codes (Standard Options)	
			AS-M6x27-W3	AS-1/4-20UNCx1-1/8-W3
1	0	M6 x 27	AS-M6x27-W3	AS-1/4-20UNCx1-1/8-W3
		1/4-20 UNC x 1-1/8	AS-1/4-20UNCx1-1/8-W3	
1A	1	M6 x 27	AS-M6x27-W3	AS-1/4-20UNCx1-1/8-W3
		1/4-20 UNC x 1-1/8	AS-1/4-20UNCx1-1/8-W3	
2	2	M6 x 32	AS-M6x32-W3	AS-1/4-20UNCx1-3/8-W3
		1/4-20 UNC x 1-3/8	AS-1/4-20UNCx1-3/8-W3	
3	3	M6 x 35	AS-M6x35-W3	AS-1/4-20UNCx1-3/8-W3
		1/4-20 UNC x 1-3/8	AS-1/4-20UNCx1-3/8-W3	
4	4	M6 x 42	AS-M6x42-W3	AS-1/4-20UNCx1-5/8-W3
		1/4-20 UNC x 1-5/8	AS-1/4-20UNCx1-5/8-W3	
5	5	M6 x 57	AS-M6x57-W3	AS-1/4-20UNC-2-3/8-W3
		1/4-20 UNC x 2-3/8	AS-1/4-20UNC-2-3/8-W3	
6	6	M6 x 65	AS-M6x65-W3	AS-1/4-20UNCx2-3/4-W3
		1/4-20 UNC x 2-3/4	AS-1/4-20UNCx2-3/4-W3	
7	7	M6 x 95	AS-M6x95-W3	AS-1/4-20UNCx4-W3
		1/4-20 UNC x 4	AS-1/4-20UNCx4-W3	
8	8	M6 x 118	AS-M6x118-W3	AS-1/4-20UNCx4-3/4-W3
		1/4-20 UNC x 4-3/4	AS-1/4-20UNCx4-3/4-W3	

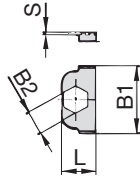
Group STAUFF	DIN	Dimensions (mm/m)				Ordering Codes (Standard Options)	
		D1	D2	H ES	H EP	ES-W3	EP
1 to 8	0 to 8	11,8 .46	6,5 .26	7,8 .31	8,6 .34	ES-W3	EP



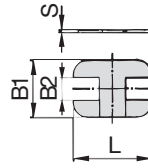
All threaded parts are available with Metric ISO thread or unified coarse (UNC) thread according to dimension table. Alternative materials and surface finishings are available upon request. Contact STAUFF for further information.

Safety Locking Plate
(for Use with Stacking Bolt AF)
Type SIG

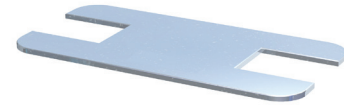
A



STAUFF Group 1



STAUFF Group 1A to 8 (7M / 8M)



Group STAUFF	DIN	Dimensions (mm/in)				Ordering Codes (Standard Options)
		L	B1	B2	S	
1	0	16	32	11,2	1	SIG-1-W3
		.63	1.26	.44	.04	
1A	1	33	28	11,2	1	SIG-1A-W3
		1.30	1.10	.44	.04	
2	2	39	28	11,2	1	SIG-2-W3
		1.54	1.10	.44	.04	
3	3	47	28	11,2	1	SIG-3-W3
		1.85	1.10	.44	.04	
4	4	56	28	11,2	1	SIG-4-W3
		2.20	1.10	.44	.04	
5	5	69	28	11,2	1	SIG-5-W3
		2.72	1.10	.44	.04	
6	6	85	28	11,2	1	SIG-6-W3
		3.35	1.10	.44	.04	
7	7	117	28	11,2	1	SIG-7-W3
		4.61	1.10	.44	.04	
8	8	143	28	11,2	1	SIG-8-W3
		5.63	1.10	.44	.04	
7M		125	40	15,2	5	SIG-7M-W3
		4.92	1.57	.60	.20	
8M		160	45	15,2	5	SIG-8M-W3
		6.30	1.77	.60	.20	

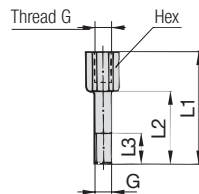
Alternative materials and surface finishings are available upon request. Contact STAUFF for further information.

Ordering Codes

Safety Locking Plate *SIG-*1-*W3

* Safety Locking Plate		SIG
* STAUFF Group		1
* Material code	Carbon Steel, zinc/nickel-plated	W3
	Stainless Steel V2A	W4
	1.4301 / 1.4305 (AISI 304 / 303)	
	Stainless Steel V4A	W5
	1.4401 / 1.4571 (AISI 316 / 316 Ti)	

Stacking Bolt
(for Use with Safety Locking Plate SIG)
Type AF



Group STAUFF	DIN	Dimensions (mm/in)					Ordering Codes (Standard Options)
		Thread G	L1	L2	L3 min.	Hex	
1	0	M6	34	20	12	11	AF-1/1A/1D-M-W3
		1/4-20 UNC	1.34	.79	.47	.43	AF-1/1A/1D-U-W3
1A	1	M6	34	20	12	11	AF-1/1A/1D-M-W3
		1/4-20 UNC	1.34	.79	.47	.43	AF-1/1A/1D-U-W3
2	2	M6	40	25	12	11	AF-2-M-W3
		1/4-20 UNC	1.57	.98	.47	.43	AF-2-U-W3
3	3	M6	44	30	12	11	AF-3-M-W3
		1/4-20 UNC	1.73	1.18	.47	.43	AF-3-U-W3
4	4	M6	49	35	12	11	AF-4-M-W3
		1/4-20 UNC	1.93	1.38	.47	.43	AF-4-U-W3
5	5	M6	64	50	12	11	AF-5-M-W3
		1/4-20 UNC	2.52	1.97	.47	.43	AF-5-U-W3
6	6	M6	74	60	12	11	AF-6-M-W3
		1/4-20 UNC	2.91	2.36	.47	.43	AF-6-U-W3
7	7	M6	99	85	12	11	AF-7-M-W3
		1/4-20 UNC	3.90	3.35	.47	.43	AF-7-U-W3
8	8	M6	124	110	12	11	AF-8-M-W3
		1/4-20 UNC	4.88	4.33	.47	.43	AF-8-U-W3
7M		M10	115	90	15	15	AF-7M-M-W3
		3/8-16 UNC	4.53	3.54	.59	.59	AF-7M-U-W3
8M		M10	150	125	15	15	AF-8M-M-W3
		3/8-16 UNC	5.91	4.92	.59	.59	AF-8M-U-W3

Ordering Codes

Stacking Bolt *AF-*1/1A/1D-*M-*W3

* Type of bolt	Stacking Bolt (according to STAUFF Standard)	AF
* STAUFF Group		1
* Thread code	Metric ISO thread	M
	Unified coarse (UNC) thread	U
* Material code	Carbon Steel, zinc/nickel-plated	W3
	Stainless Steel V2A	W4
	1.4301 / 1.4305 (AISI 304 / 303)	
	Stainless Steel V4A	W5
	1.4401 / 1.4571 (AISI 316 / 316 Ti)	

All threaded parts are available with Metric ISO thread or unified coarse (UNC) thread according to dimension table. Alternative materials and surface finishings are available upon request. Contact STAUFF for further information.



A



① Type of Installation

Please select the type of installation (e.g. Weld Plates, Rail Nuts etc.) and add the corresponding Code to position ① of the order code for your clamp assembly.

Without Installation Equipment
Code: **none**

Installation on Weld Plate

Single Weld Plate
Code: **SP**

Elongated Weld Plate
Code: **SPV**

Twin Weld Plate (for STAUFF Group 1 to 6 only)
Code: **DSP**

Group Weld Plate (for STAUFF Group 1 to 6 only)
Code: **RAP**

Angled Weld Plate (for STAUFF Group 1 to 6 only)
Code: **WSP**

Bridge Weld Plate (for STAUFF Group 1A to 6 only)
Code: **BSP**

Installation on Mounting / Channel Rail

Hexagon Rail Nut
Code: **SM**

Channel Rail Adaptor
Code: **CRA**

② Group Size & Diameter

Please select the required group size and diameter and add the corresponding Code to position ② of the order code for your clamp assembly.

Group STAUFF (DIN)	Outside Diameter P / T / H (mm)	Availability of Clamp Body Materials & Designs			Code
		Profiled Design	Type H	Type RI	
1 (0)	6	●	●	○	106
	6,4	●	●	○	106.4
	8	●	●	○	108
	9,5	●	●	○	109.5
	10	●	●	○	110
1A (1)	12	●	●	○	112
	6	●	●	○	106A
	6,4	●	●	○	106.4A
	8	●	●	○	108A
	9,5	●	●	○	109.5A
2 (2)	10	●	●	○	110A
	12	●	●	○	112A
	12,7	●	●	○	212.7
	13,5	●	●	○	213.5
	14	●	●	○	214
	15	●	●	○	215
	16	●	●	○	216
	17,2	●	●	○	217.2
	18	●	●	○	218
	19	●	●	○	319
3 (3)	20	●	●	○	320
	21,3	●	●	○	321.3
	22	●	●	○	322
	25	●	●	○	325
	25,4	●	●	○	325.4
4 (4)	6	○	○	●	406
	8	○	○	●	408
	10	○	○	●	410
	12	○	○	●	412
	12,7	○	○	●	412.7
	14	○	○	●	414
	15	○	○	●	415
	16	○	○	●	416
	17,2	○	○	●	417.2
	18	○	○	●	418
	19	○	○	●	419
	26,9	●	●	○	426.9
	28	●	●	○	428
	28,6	●	○	○	428.6
	30	●	●	○	430
32	●	●	○	432	

Group STAUFF (DIN)	Outside Diameter P / T / H (mm)	Availability of Clamp Body Materials & Designs			Code
		Profiled Design	Type H	Type RI	
5 (5)	32	●	●	○	532
	33,7	●	●	○	533.7
	35	●	●	○	535
	38	●	●	○	538
	40	●	●	○	540
	41,3	●	○	○	541.3
	42	●	●	○	542
	20	○	○	●	620
	21,3	○	○	●	621.3
	22	○	○	●	622
6 (6)	25	○	○	●	625
	26,9	○	○	●	626.9
	28	○	○	●	628
	30	○	○	●	630
	32	○	○	●	632
	44,5	●	●	○	644.5
	48,3	●	●	○	648.3
	50,8	●	●	○	650.8
	54	●	●	○	654
	57,2	●	●	○	757.2
7 (7)	60,3	●	●	○	760.3
	63,5	●	●	○	763.5
	70	●	●	○	770
	73	●	●	○	773
	76,1	●	●	○	776.1
8 (8)	88,9	●	●	○	888.9
	102	●	●	○	8102L

● Standard Option

Please see pages 34 and 35 with detailed order examples for some of the most popular Standard Series clamp assemblies.

③ Clamp Body Design & Material

Please select the design and material of your clamp body and add the corresponding **Code** to position ③ of the order code for your clamp assembly.

Please check the availability of the selected clamp body design and material according to the matrix table in ②.

Profiled Design



Polypropylene
Code: **PP**



Polypropylene (Colour: Black)
Code: **PP-BK**



Polyamide
Code: **PA**



Thermoplastic Elastomer (87 Shore-A)
Code: **SA87**



Aluminium
Code: **AL** (for STAUFF Group 1A to 6 only)

Type H (Smooth)



Polypropylene
Code: **PP-H**



Polypropylene (Colour: Black)
Code: **PP-H-BK**



Polyamide
Code: **PA-H**



Thermoplastic Elastomer (87 Shore-A)
Code: **SA87-H**

Type RI (with Elastomer Insert)



Polypropylene
Code: **PP-R** (for STAUFF Group 4 and 6 only)



Polyamide
Code: **PA-R** (for STAUFF Group 4 and 6 only)

See pages 178 / 179 for material properties and technical information.

Please contact STAUFF for further details on fire-proof clamp body materials, tested and approved according to several international fire-protection standards.

④ Mounting & Fitting Combination

Please select the mounting and fitting combination (e.g. bolts, screws, cover plates etc.) and add the corresponding **Code** to position ④ of the order code for your clamp assembly.

Installation with Cover Plate and Bolts

Cover Plate DP with
Hexagon Head Bolts AS
Code: **DP-AS**

Cover Plate DP with
Socket Cap Screws IS*
Code: **DP-IS**

Installation with Locking Plate and Bolts

Safety Locking Plate SIG with
Stacking Bolts AF
Code: **SIG-AF**

Installation with Inserts and Bolts

Inserts EP (Plastic) with
Hexagon Head Bolts AS
Code: **EP-AS**

Inserts ES (Steel) with
Hexagon Head Bolts AS
Code: **ES-AS**

Installation with Bolts only

Socket Cap Screws IS (Washers US included)
Code: **IS**

Slotted Head Screws LI (Washers US included)
Code: **LI** (for STAUFF Group 1 to 6 only)

* Special lengths of Socket Cap Screws IS required. For exact lengths, please see details of Hexagon Head Bolt, type AS (for use with Cover Plates DP) on page 28.

⑤ Thread Type

Please select the required thread type and add the corresponding **Code** to position ⑤ of the order code for your clamp assembly.

Metric ISO thread
Code: **M**

Unified coarse (UNC) thread
Code: **U**

All threaded parts are available with Metric ISO thread or unified coarse (UNC) thread according to dimension table.

⑥ Material & Surface Finishing

Please select the required material & surface finishing of the metal parts and add the corresponding **Code** to position ⑥ of the order code for your clamp assembly.

Metal parts made of Carbon Steel, zinc/nickel-plated **W3**

Metal parts made of Stainless Steel V2A
1.4301 / 1.4305 (AISI 304 / 303) **W4**

Metal parts made of Stainless Steel V4A
1.4401 / 1.4571 (AISI 316 / 316 Ti) **W5**

Weld Plate made of Carbon Steel, phosphated; Other metal parts made of Carbon Steel, zinc/nickel-plated **W10**

Individual combinations of alternative materials and surface finishings are available upon request. Contact STAUFF for further information.

⑦ Assembling & Kitting

If required, please select an additional assembling and kitting option and add the corresponding **Code** to the last position of the order code for your clamp assembly.

Components supplied separately
Code: **none** (standard option)

Components assembled
Code: **A** (special option)

Components packed in kits
Code: **K** (special option)

A



- 2x **Hexagon Head Bolt**
Surface: W3
Thread: Metric
- 1x **Cover Plate**
Surface: W3
- 1x **Clamp Body** (two halves)
STAUFF Group 2 (DIN 2)
O.D. 12,7 mm / .50 in
Material: Polypropylene
Profiled inside surface
with tension clearance
- 1x **Single Weld Plate**
Surface: W2
Thread: Metric

Order Code

SP-212.7-PP-DP-AS-M-W10

W10 is the standard option for this type of installation.



- 2x **Socket Cap Screw**
with Washer
Surface: W3
Thread: Metric
- 1x **Clamp Body** (two halves)
STAUFF Group 2 (DIN 2)
O.D. 12,7 mm / .50 in
Material: Polypropylene
Profiled inside surface
with tension clearance
- 1x **Single Weld Plate**
Surface: W2
Thread: Metric

Order Code

SP-212.7-PP-IS-M-W10

W10 is the standard option for this type of installation.



- 2x **Slotted Head Screw**
with Washer
Surface: W3
Thread: Metric
- 1x **Clamp Body** (two halves)
STAUFF Group 2 (DIN 2)
O.D. 12,7 mm / .50 in
Material: Polypropylene
Profiled inside surface
with tension clearance
- 1x **Single Weld Plate**
Surface: W2
Thread: Metric

Order Code

SP-212.7-PP-LI-M-W10

W10 is the standard option for this type of installation.
Available up to STAUFF Group 6 (DIN Group 6) only.



- 2x **Hexagon Head Bolt**
Surface: W3
Thread: Metric
- 1x **Cover Plate**
Surface: W3
- 1x **Clamp Body** (two halves)
STAUFF Group 2 (DIN 2)
O.D. 12,7 mm / .50 in
Material: Polypropylene
Profiled inside surface
with tension clearance
- 1x **Elongated Weld Plate**
Surface: W2
Thread: Metric

Order Code

SPV-212.7-PP-DP-AS-M-W10

W10 is the standard option for this type of installation.



- 2x **Socket Cap Screw**
with Washer
Surface: W3
Thread: Metric
- 1x **Clamp Body** (two halves)
STAUFF Group 2 (DIN 2)
O.D. 12,7 mm / .50 in
Material: Polypropylene
Profiled inside surface
with tension clearance
- 1x **Elongated Weld Plate**
Surface: W2
Thread: Metric

Order Code

SPV-212.7-PP-IS-M-W10

W10 is the standard option for this type of installation.



- 2x **Slotted Head Screw**
with Washer
Surface: W3
Thread: Metric
- 1x **Clamp Body** (two halves)
STAUFF Group 2 (DIN 2)
O.D. 12,7 mm / .50 in
Material: Polypropylene
Profiled inside surface
with tension clearance
- 1x **Elongated Weld Plate**
Surface: W2
Thread: Metric

Order Code

SPV-212.7-PP-LI-M-W10

W10 is the standard option for this type of installation.
Available up to STAUFF Group 6 (DIN Group 6) only.



- 2x **Hexagon Head Bolt**
Surface: W3
Thread: Metric
- 1x **Cover Plate**
Surface: W3
- 1x **Clamp Body** (two halves)
STAUFF Group 2 (DIN 2)
O.D. 12,7 mm / .50 in
Material: Polypropylene
Profiled inside surface
with tension clearance
- 2x **Hexagon Rail Nut**
Surface: W3
Thread: Metric

Order Code (Mounting Rail TS not included.)

SM-212.7-PP-DP-AS-M-W3

W3 is the standard option for this type of installation.



- 2x **Socket Cap Screw**
with Washer
Surface: W3
Thread: Metric
- 1x **Clamp Body** (two halves)
STAUFF Group 2 (DIN 2)
O.D. 12,7 mm / .50 in
Material: Polypropylene
Profiled inside surface
with tension clearance
- 2x **Hexagon Rail Nut**
Surface: W3
Thread: Metric

Order Code (Mounting Rail TS not included.)

SM-212.7-PP-IS-M-W3

W3 is the standard option for this type of installation.



- 2x **Slotted Head Screw**
with Washer
Surface: W3
Thread: Metric
- 1x **Clamp Body** (two halves)
STAUFF Group 2 (DIN 2)
O.D. 12,7 mm / .50 in
Material: Polypropylene
Profiled inside surface
with tension clearance
- 2x **Hexagon Rail Nut**
Surface: W3
Thread: Metric

Order Code (Mounting Rail TS not included.)

SM-212.7-PP-LI-M-W3

W3 is the standard option for this type of installation.
Available up to STAUFF Group 6 (DIN Group 6) only.

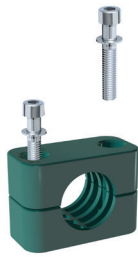


- 2x **Hexagon Head Bolt**
Surface: W3
Thread: Metric
- 1x **Cover Plate**
Surface: W3
- 1x **Clamp Body** (two halves)
STAUFF Group 2 (DIN 2)
O.D. 12,7 mm / .50 in
Material: Polypropylene
Profiled inside surface
with tension clearance

Order Code

212.7-PP-DP-AS-M-W3

W3 is the standard option for this type of installation.



- 2x **Socket Cap Screw**
with Washer
Surface: W3
Thread: Metric
- 1x **Clamp Body** (two halves)
STAUFF Group 2 (DIN 2)
O.D. 12,7 mm / .50 in
Material: Polypropylene
Profiled inside surface
with tension clearance

Order Code

212.7-PP-IS-M-W3

W3 is the standard option for this type of installation.

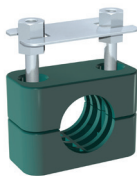


- 2x **Slotted Head Screw**
with Washer
Surface: W3
Thread: Metric
- 1x **Clamp Body** (two halves)
STAUFF Group 2 (DIN 2)
Tube-O.D. 12,7 mm / .50 in
Material: Polypropylene
Profiled inside surface
with tension clearance

Order Code

212.7-PP-LI-M-W3

W3 is the standard option for this type of installation.



- 2x **Stacking Bolt**
Surface: W3
Thread: Metric
- 1x **Safety Locking Plate**
Surface: W3
- 1x **Clamp Body** (two halves)
STAUFF Group 2 (DIN 2)
O.D. 12,7 mm / .50 in
Material: Polypropylene
Profiled inside surface
with tension clearance

Order Code

212.7-PP-SIG-AF-M-W3

W3 is the standard option for this type of installation.

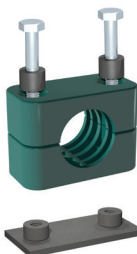


- 1x **Socket Cap Screw**
with Washer
Surface: W3
Thread: Metric
- 1x **Clamp Body** (two halves)
STAUFF Group 1 (DIN 0)
O.D. 6 mm / .24 in
Material: Polypropylene
Profiled inside surface
with tension clearance
Thread: Metric
- 1x **Single Weld Plate**
Surface: W2
Thread: Metric

Order Code*

SP-106-PP-IS-M-W10

W10 is the standard option for this type of installation.

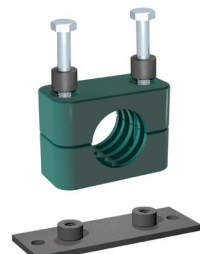


- 2x **Hexagon Head Bolt**
Surface: W3
Thread: Metric
- 2x **Insert**
Material: Plastic
- 1x **Clamp Body** (two halves)
STAUFF Group 2 (DIN 2)
O.D. 12,7 mm / .50 in
Material: Polypropylene
Profiled inside surface
with tension clearance
- 1x **Single Weld Plate**
Surface: W2
Thread: Metric

Order Code

SP-212.7-PP-EP-AS-M-W10

W10 is the standard option for this type of installation.



- 2x **Hexagon Head Bolt**
Surface: W3
Thread: Metric
- 2x **Insert**
Material: Plastic
- 1x **Clamp Body** (two halves)
STAUFF Group 2 (DIN 2)
O.D. 12,7 mm / .50 in
Material: Polypropylene
Profiled inside surface
with tension clearance
- 1x **Elongated Weld Plate**
Surface: W2
Thread: Metric

Order Code

SPV-212.7-PP-EP-AS-M-W10

W10 is the standard option for this type of installation.

Thread codes

All threaded parts are available with Metric ISO thread or unified coarse (UNC) thread according to dimension table.

Metric ISO thread	M
Unified coarse (UNC) thread	U

Material codes

The below listed material codes describe the materials and surface finishings of metal parts that are most relevant for Standard Series clamp assemblies. Individual combinations of alternative materials and surface finishings are available upon request. Contact STAUFF for further information.

Metal parts made of Carbon Steel, zinc/nickel-plated	W3
Metal parts made of Stainless Steel V2A 1.4301 / 1.4305 (AISI 304 / 303)	W4
Metal parts made of Stainless Steel V4A 1.4401 / 1.4571 (AISI 316 / 316 Ti)	W5
Weld Plate made of Carbon Steel, phosphated; Other metal parts made of Carbon Steel, zinc/nickel-plated	W10

Technical Notes

* Because of their design, STAUFF Group 1 (DIN Group 0) clamp assemblies only include one single bolt / screw.

